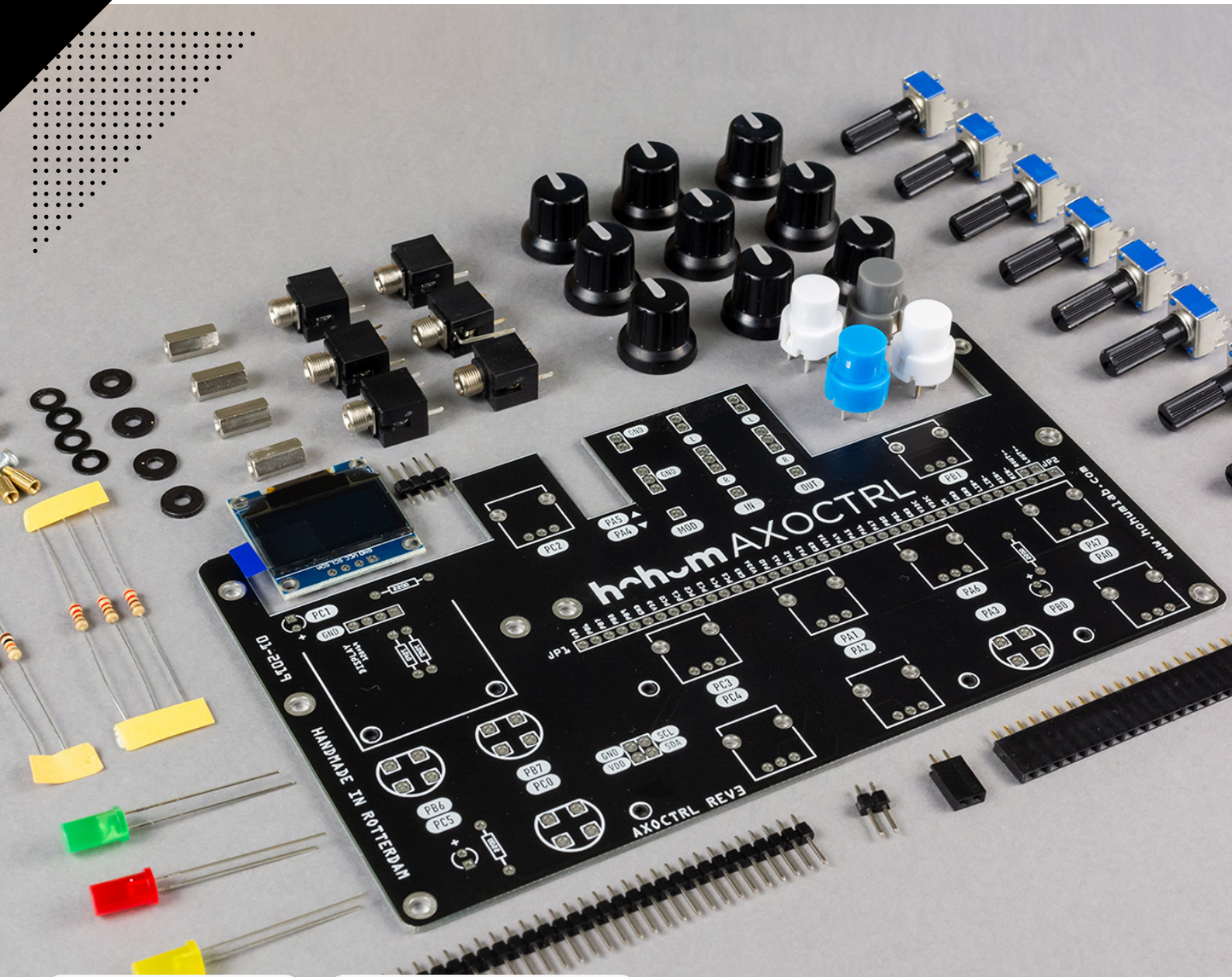


AXOCTRL FULL KIT ASSEMBLY GUIDE

MAY 2021



Difficulty
MEDIUM



Time required
30-45 minutes

GET READY

Knowledge of electronic is not required for this product.

TOOLS YOU'LL NEED



Soldering Iron
0.2-0.5



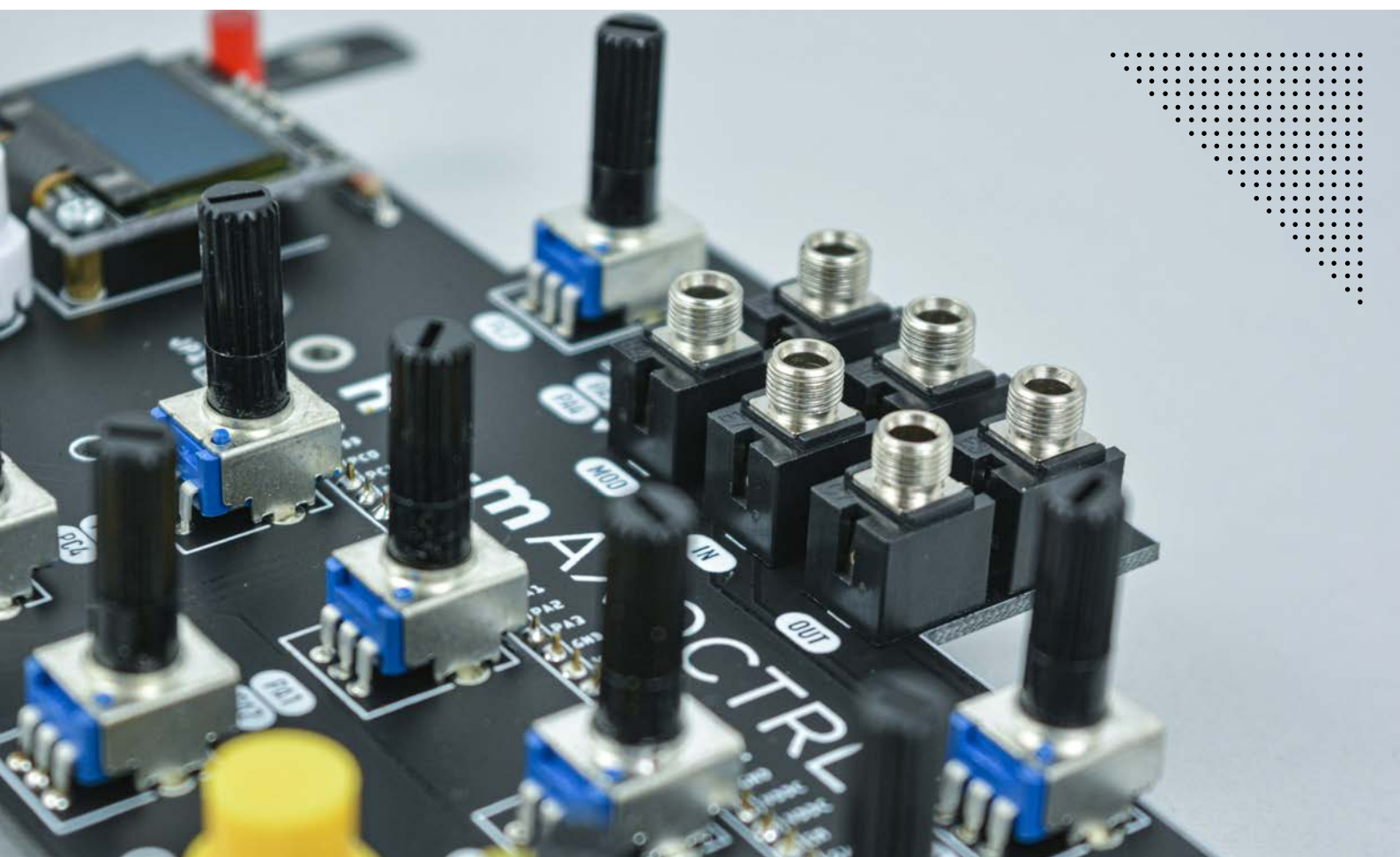
Soldering wire



Screwdriver
Star head mid-small

BEFORE TO START

In the box you'll find all the components needed to assembly your AXOCTRL KIT. Please double check with the BOM that no parts are missing in your box.

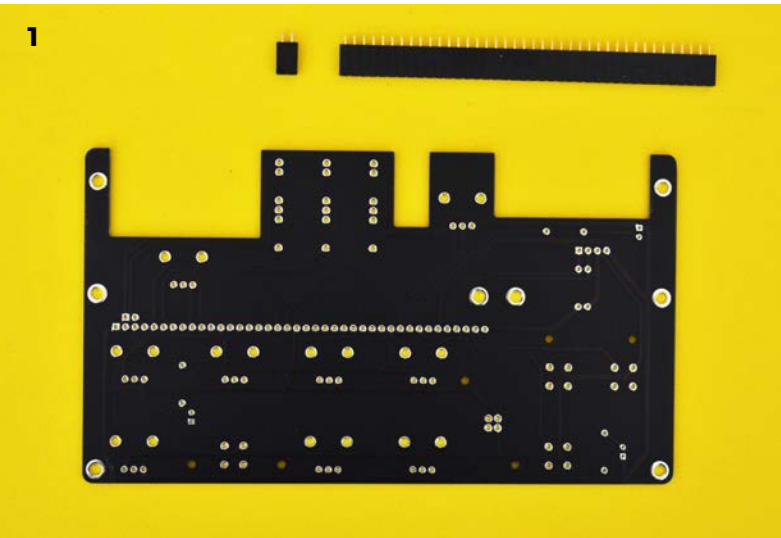


01.

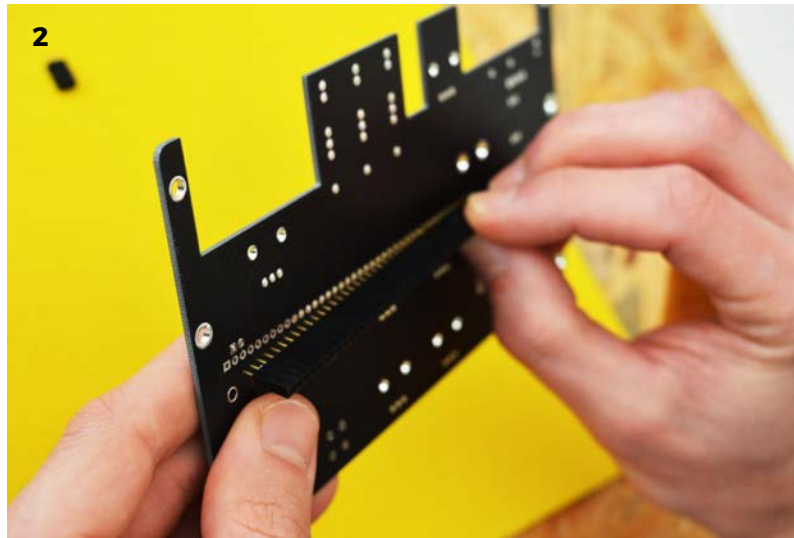
40 PINS HEADER

Start with the female 40 pins header and place it on the backside of the PCB. Initially solder the first pin and make sure that the header looks straight and sticks well. Then you can solder the remaining pins.

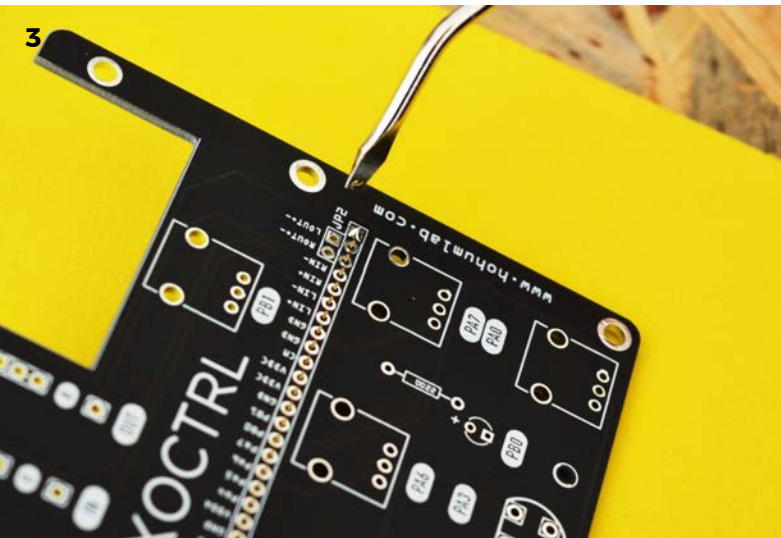
1



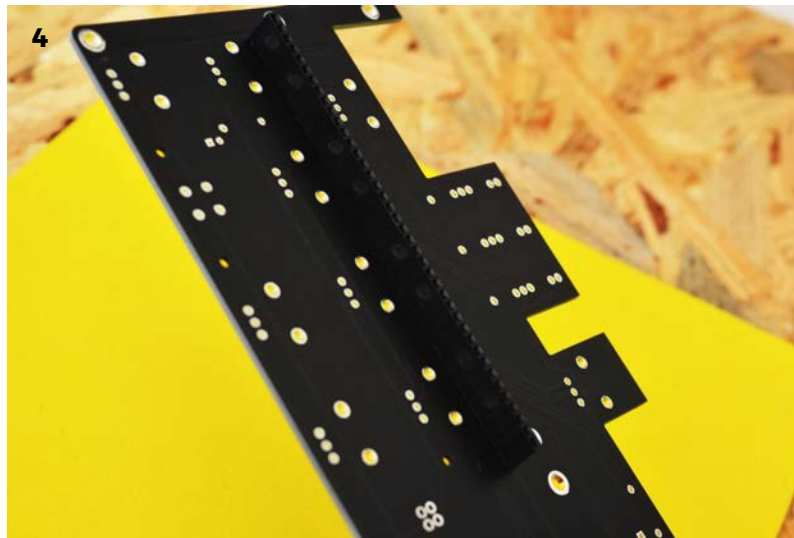
2



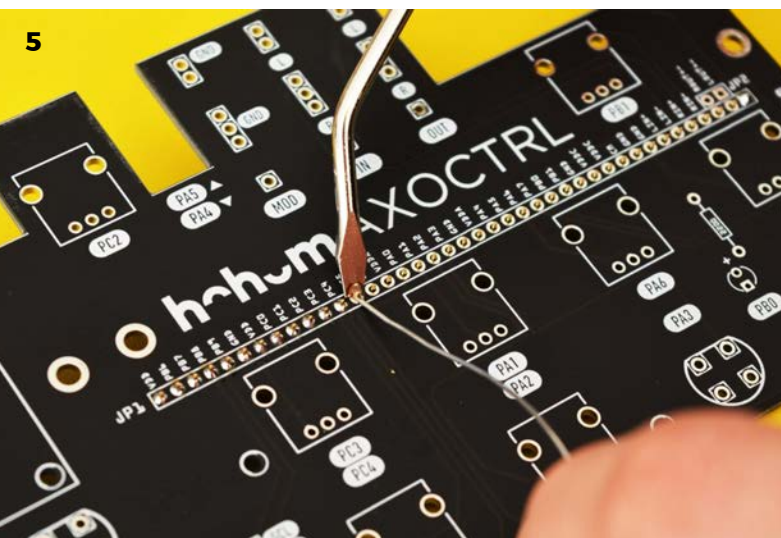
3



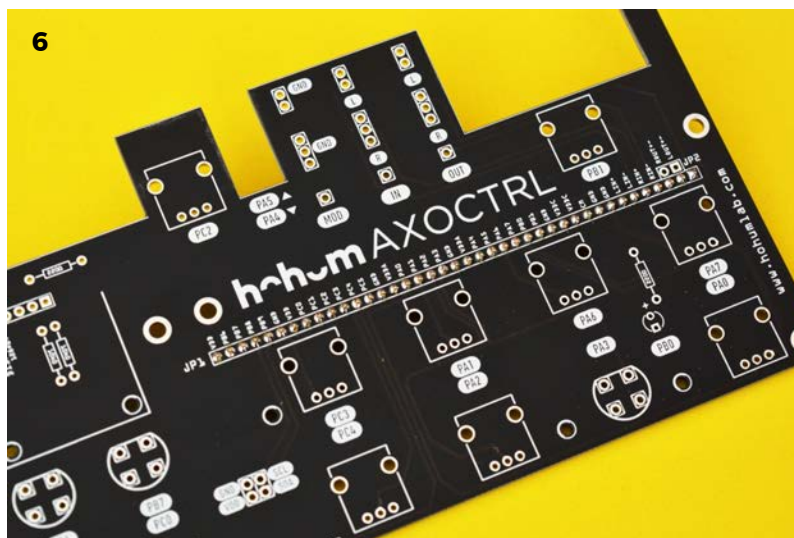
4



5

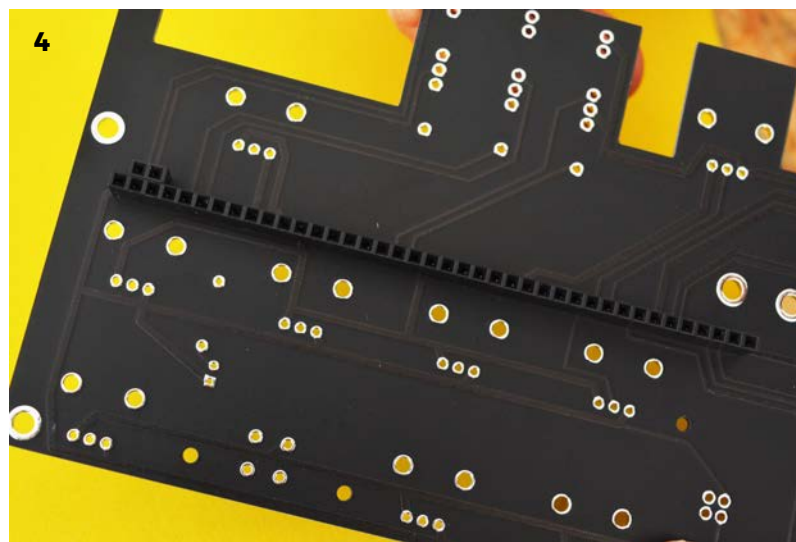
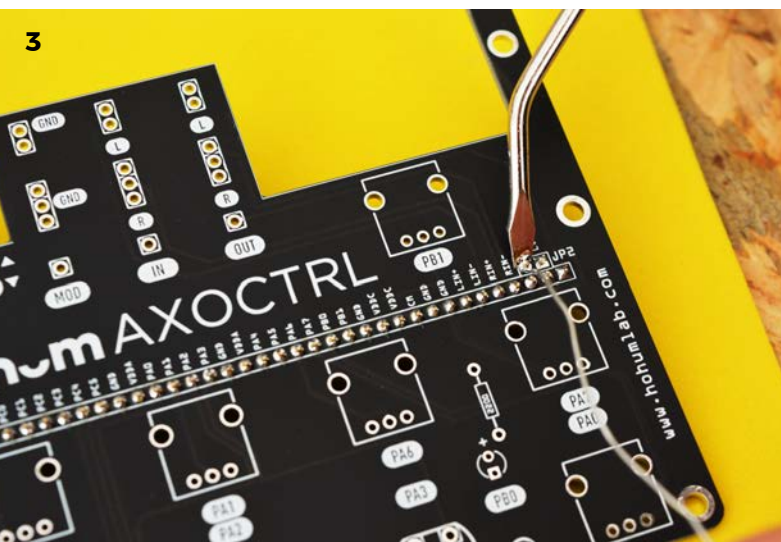
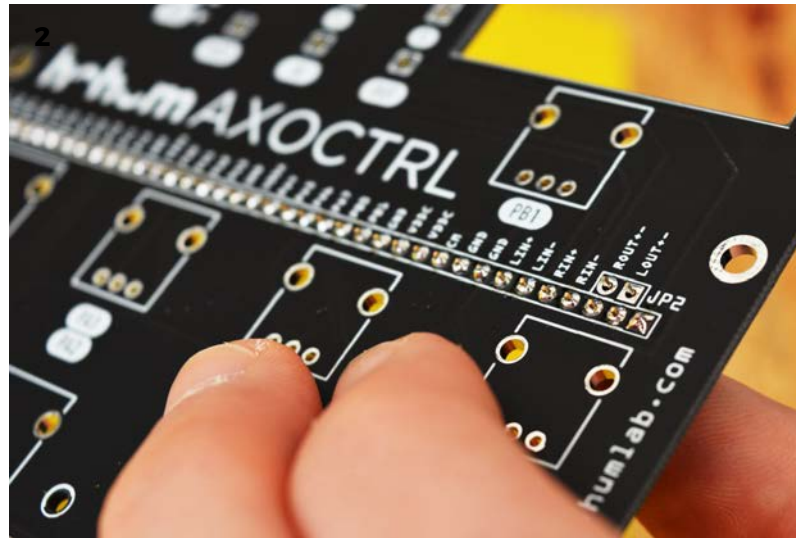


6



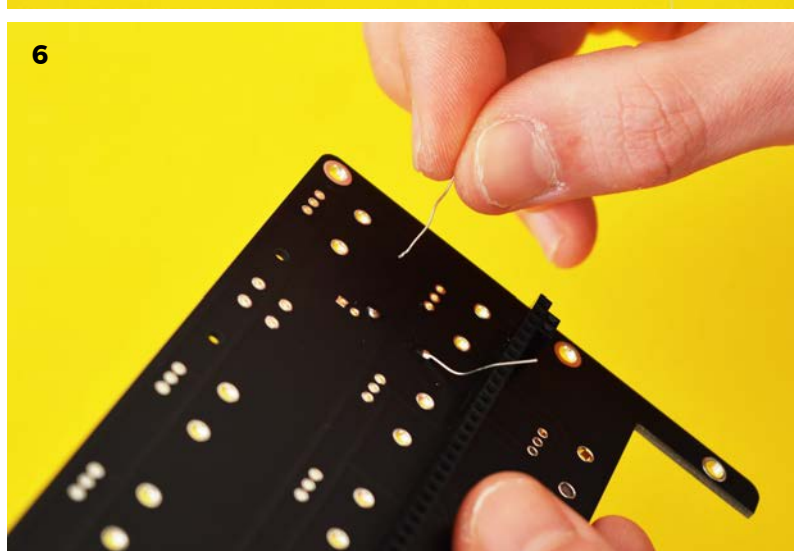
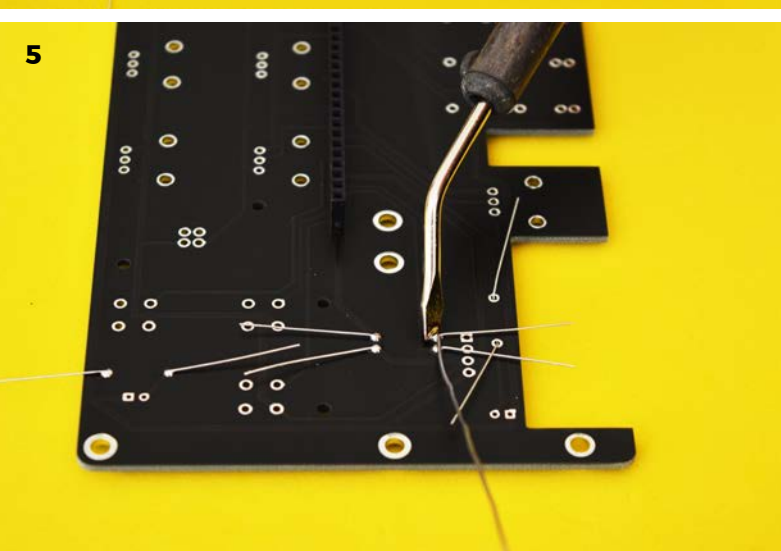
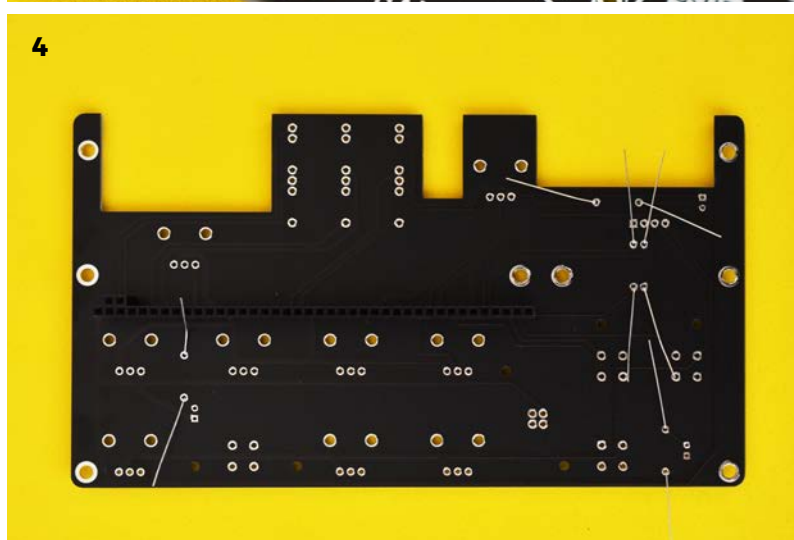
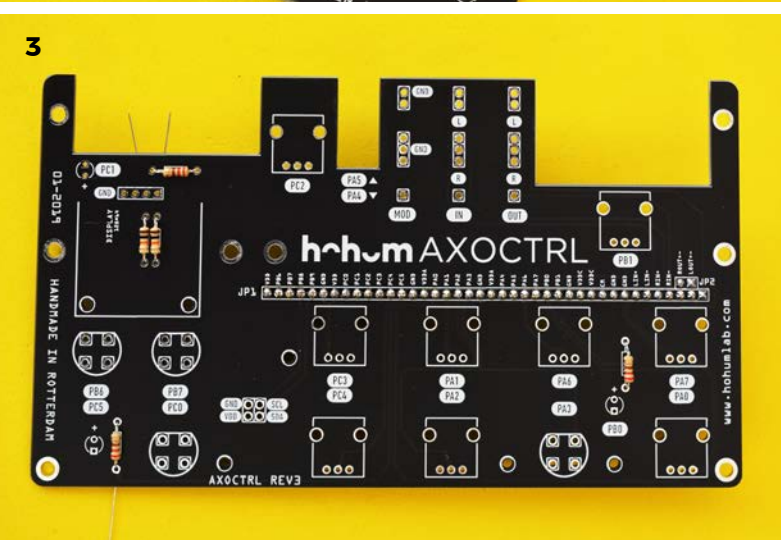
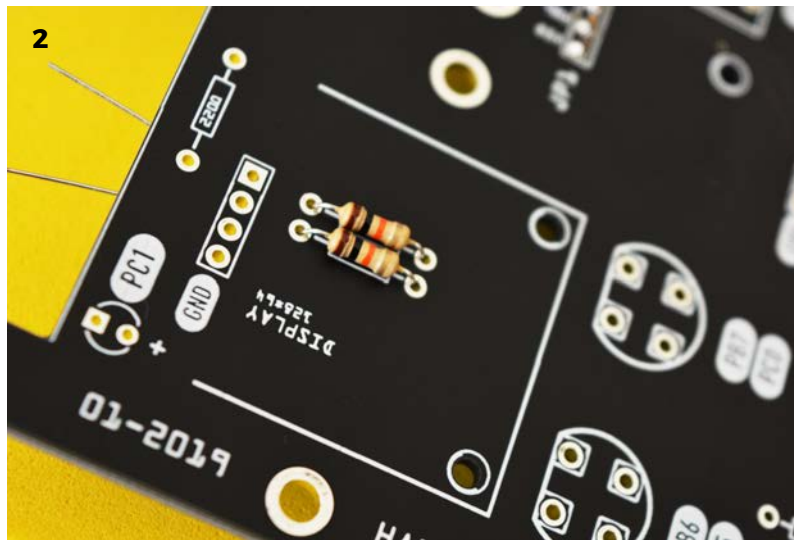
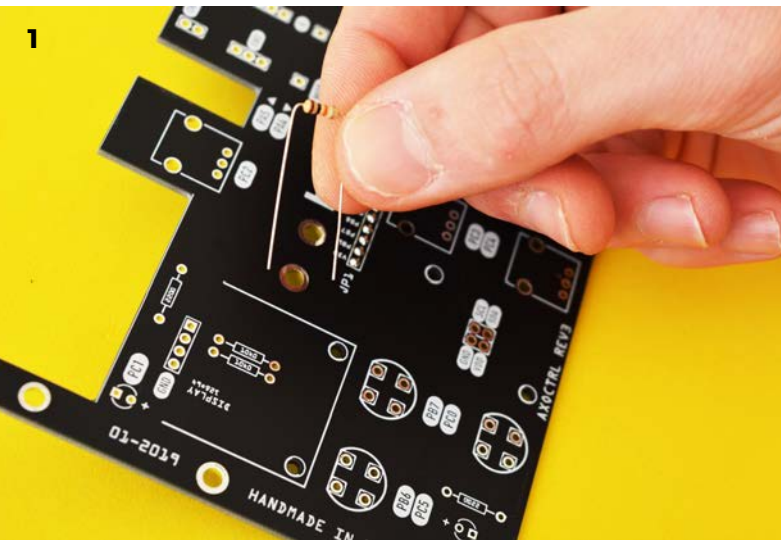
02. 2 PINS HEADER

Place the female 2 pins header on the backside of the PCB and solder it.



03. RESISTORS

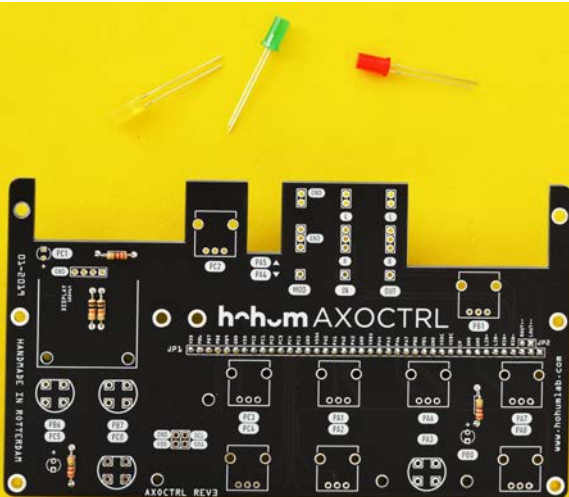
Place the resistors on the front side. Make sure to match the resistors with the value written on the silkscreen. The two 10k resistors go under the display. Once you've placed all the resistors, turn the PCB, bend the leads and start soldering. Once you have finished, remove the exceeding leads.



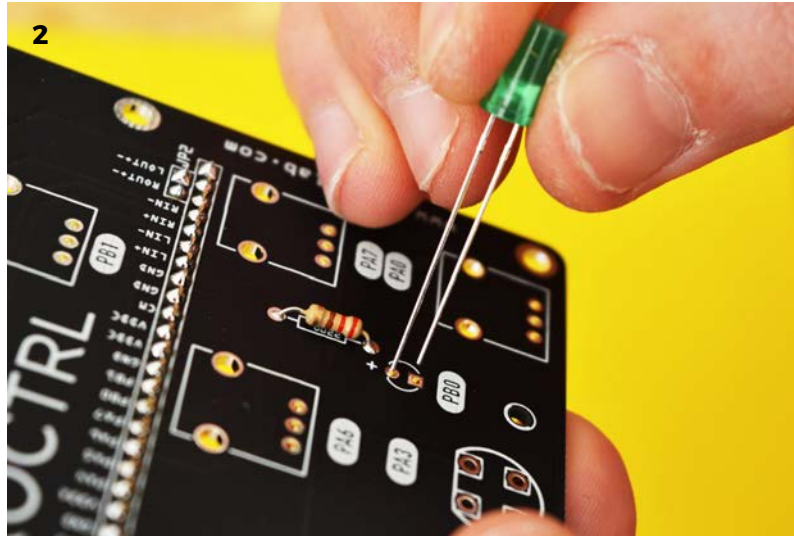
04. LEDS

Start placing the LED paying attention to polarity: the longer lead goes to the + symbol side (round hole). You're free to arrange the colours as you prefer or you can follow our colour-scheme. After positioning the LEDs, bend the leads and start soldering. Once you have finished, remove the exceeding leads.

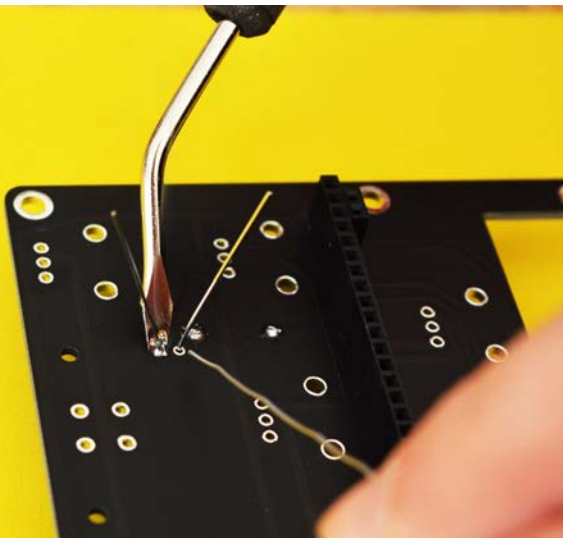
1



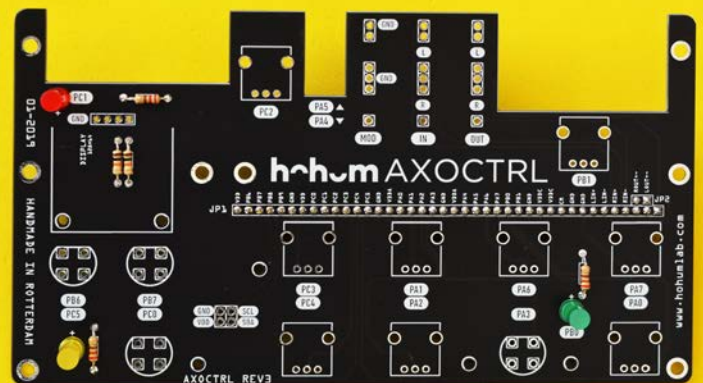
2



3



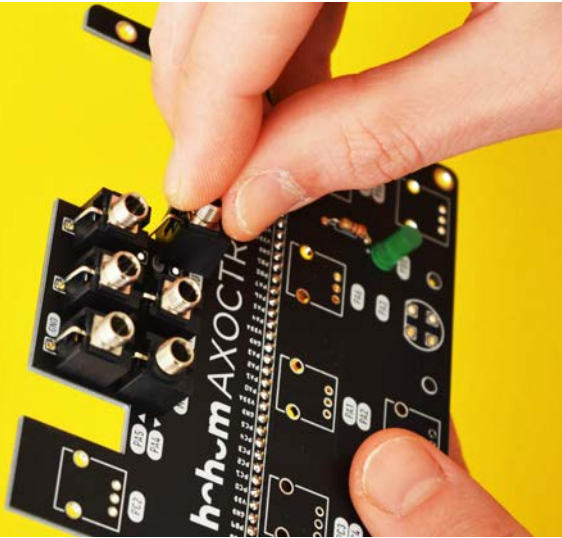
4



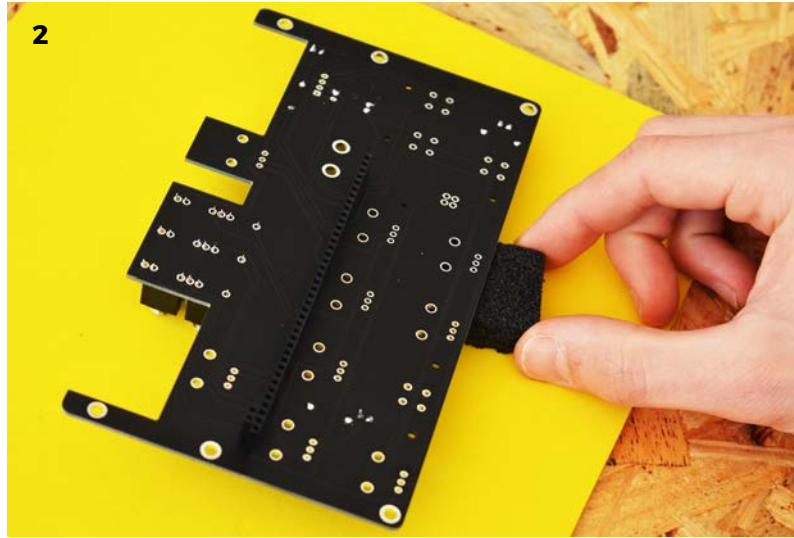
05. 3,5MM JACK PORTS

Place now the 6 jack ports on the top of the PCB. They should fit and stick to the surface. Then turn the PCB and start soldering the pins. Help yourself with a small support to keep straight the PCB while soldering.

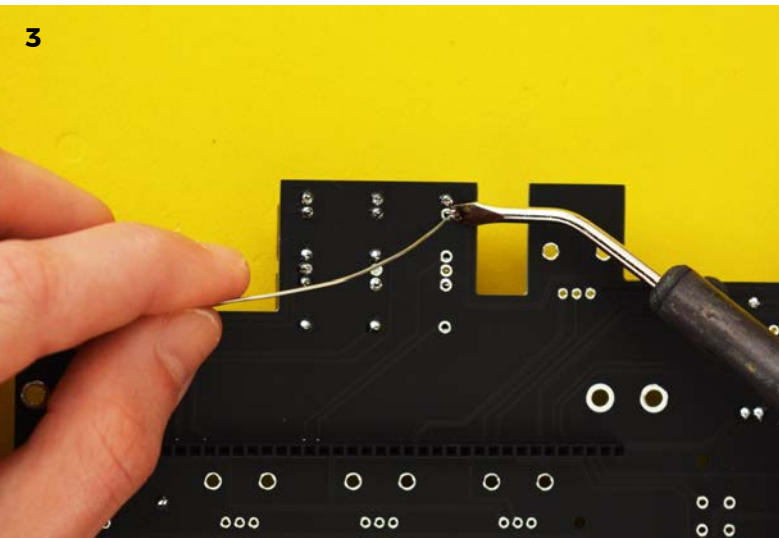
1



2



3

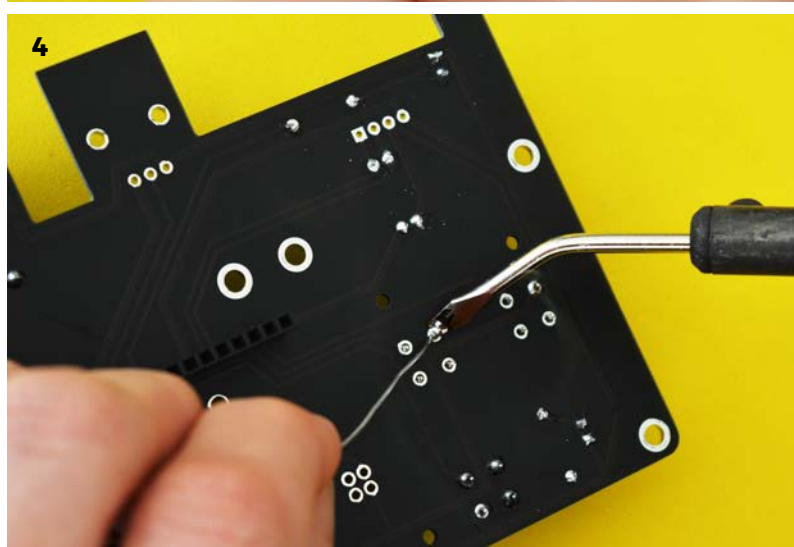
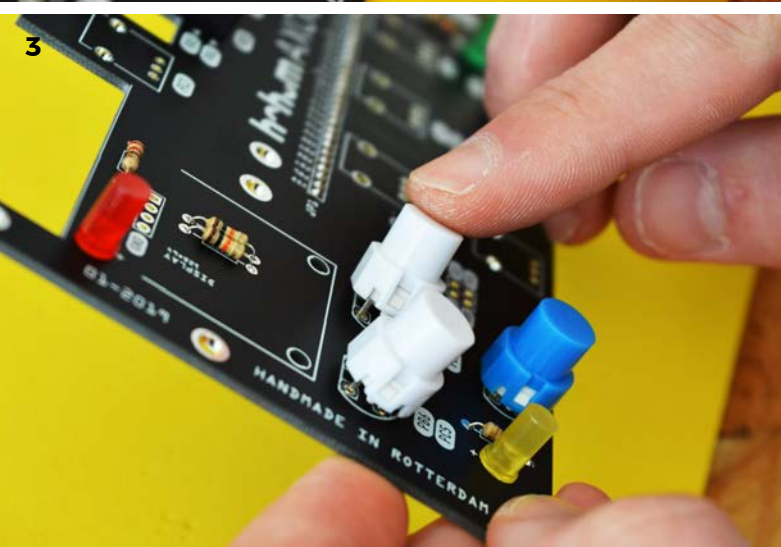
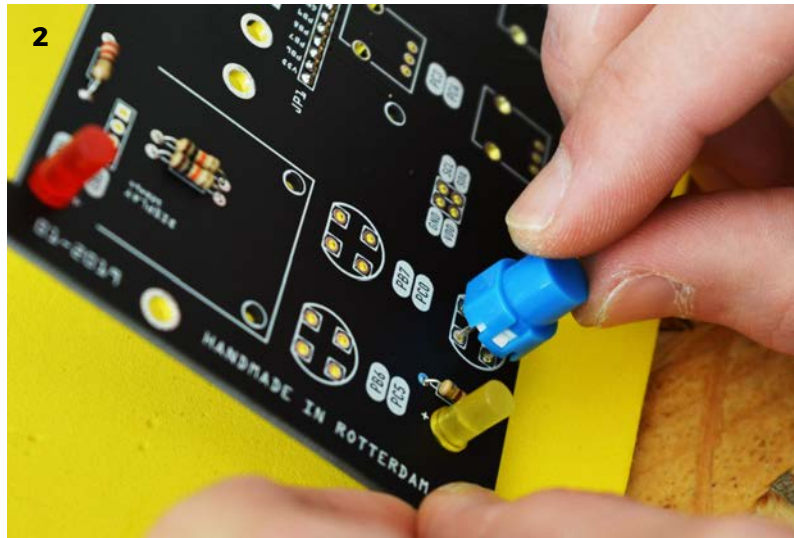
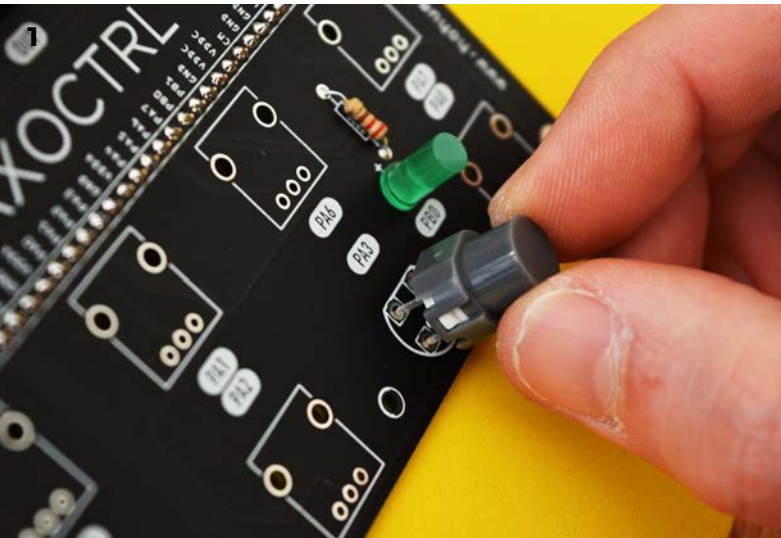


4



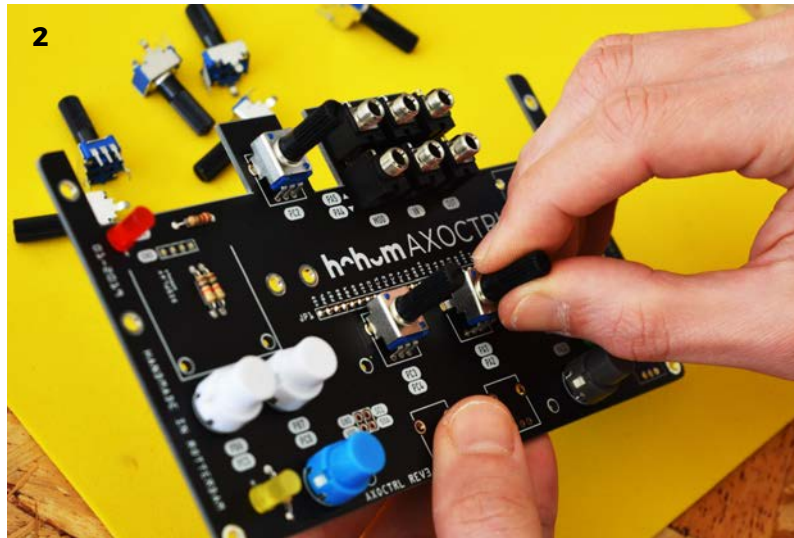
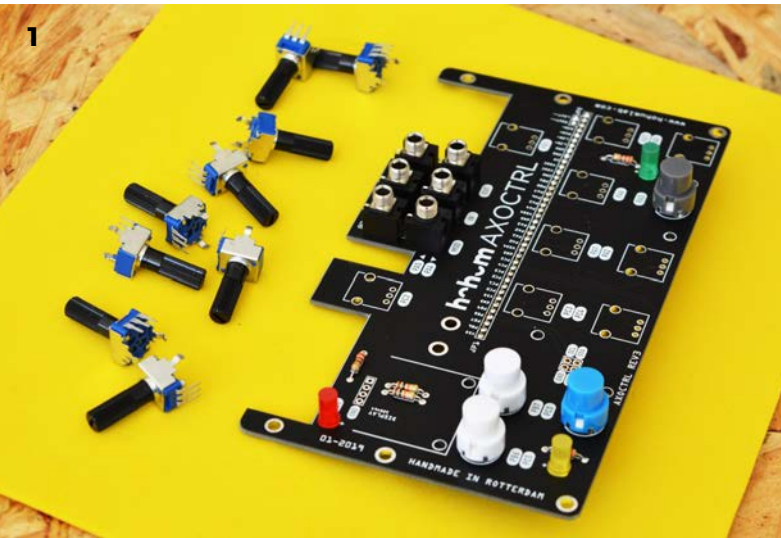
06. BUTTONS

Place and solder now the buttons one at time. The button should be placed with the straight-side to the top as shown on the silkscreen. Start soldering only one pin and then check that the button is straight. Tip: push the button while soldering the first pin to simplify the positioning. Then solder the remaining pins. Repeat the same process for the other buttons.



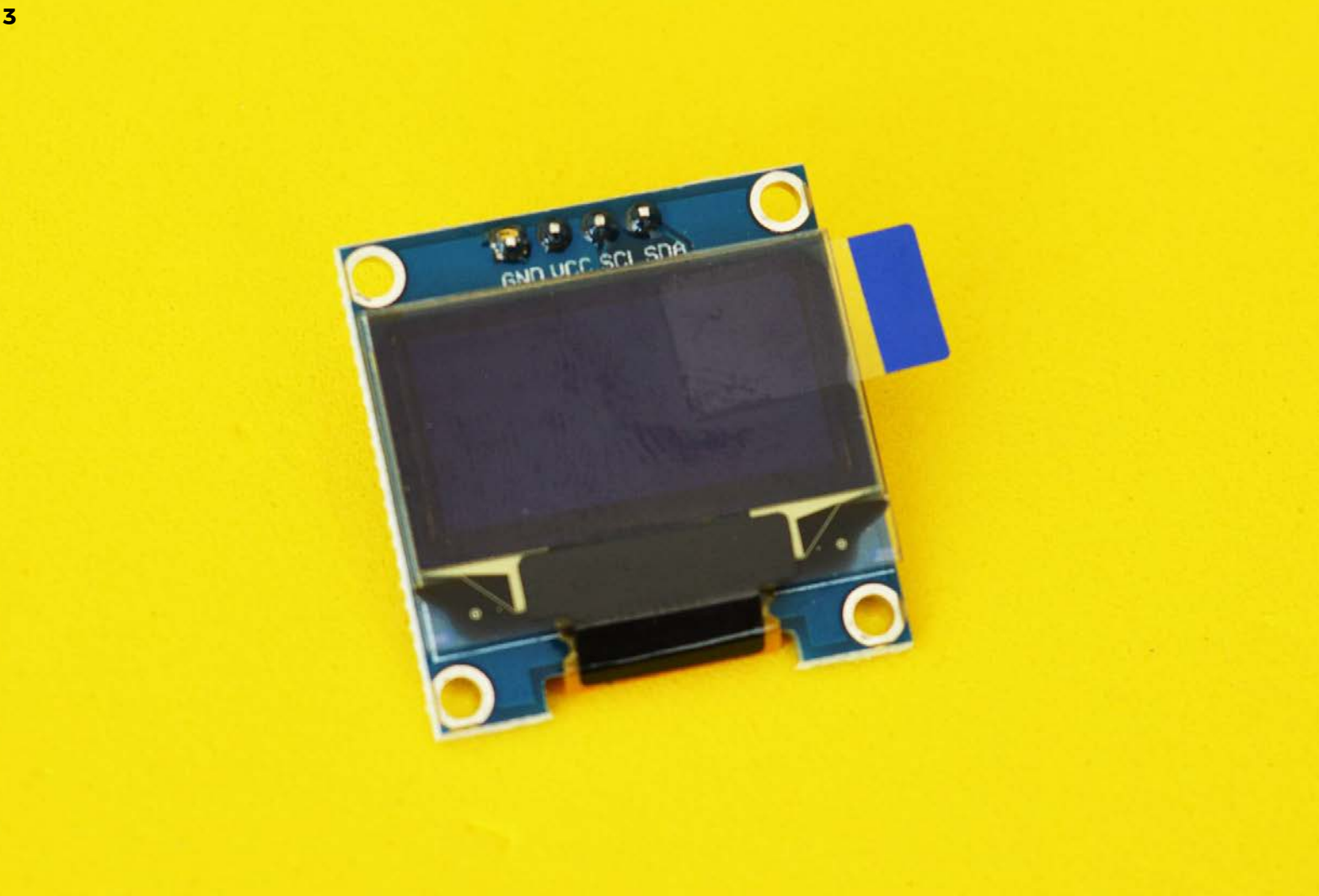
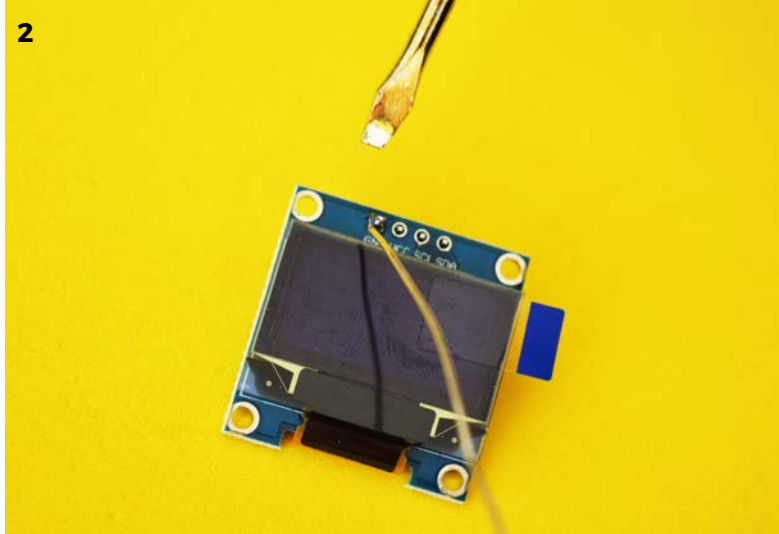
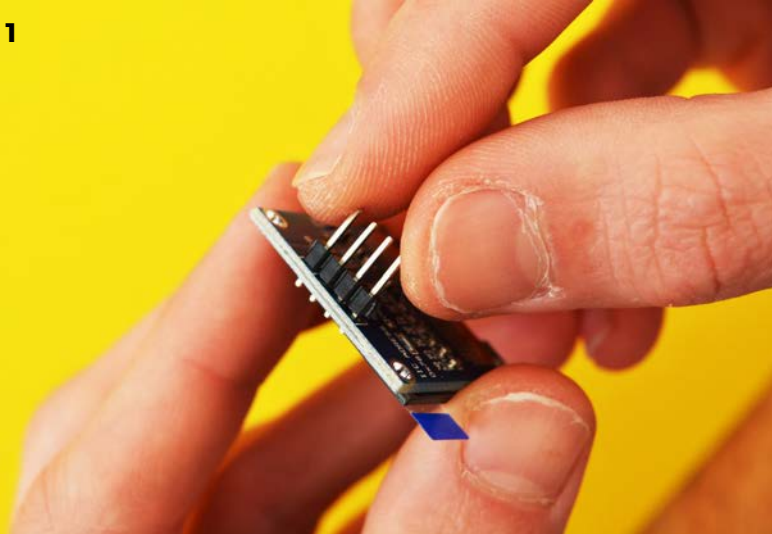
07. POTENTIOMETERS

Place now the potentiometers, they should easily stick to the surface. Then turn the PCB and complete the operation soldering all the lugs.



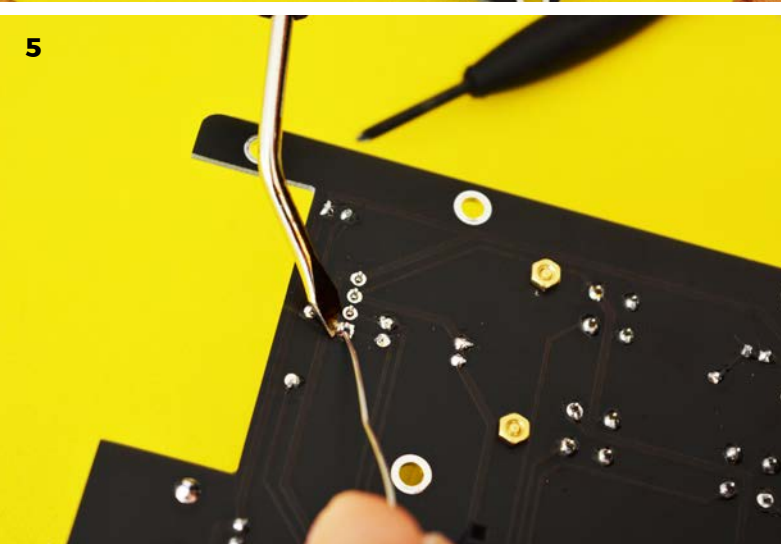
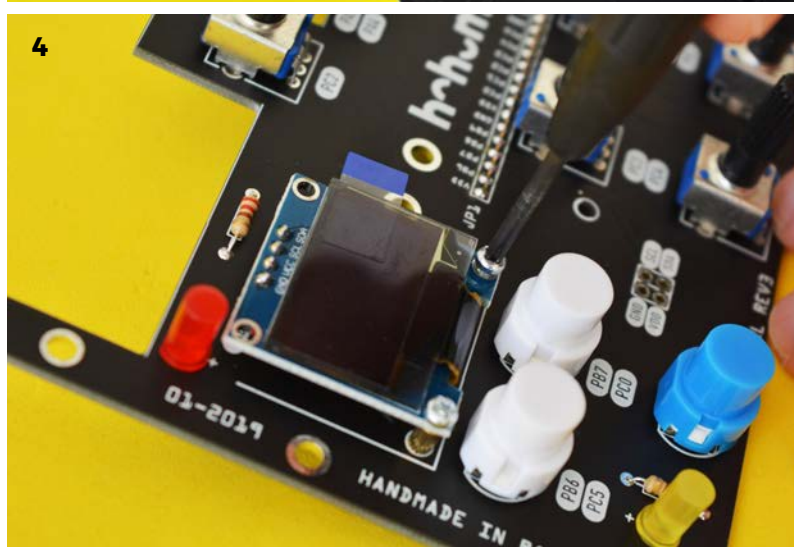
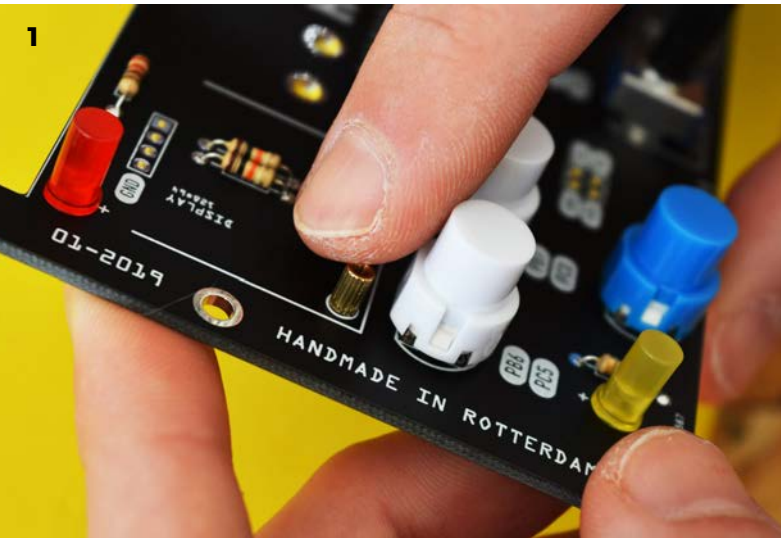
08. **DISPLAY - PART 1**

Fix the male 4 pins header to the backside of the display. Be careful with soldering it because the pin holes on this device are very small. The header must be straight.



09. DISPLAY - PART 2

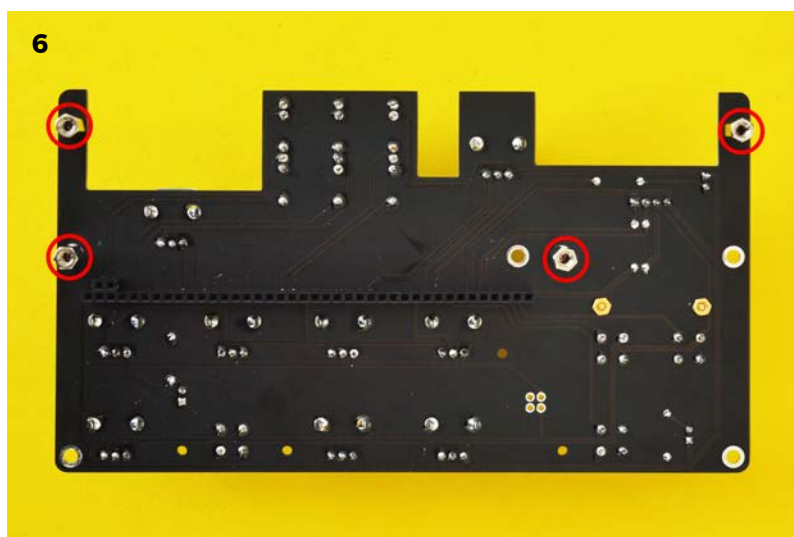
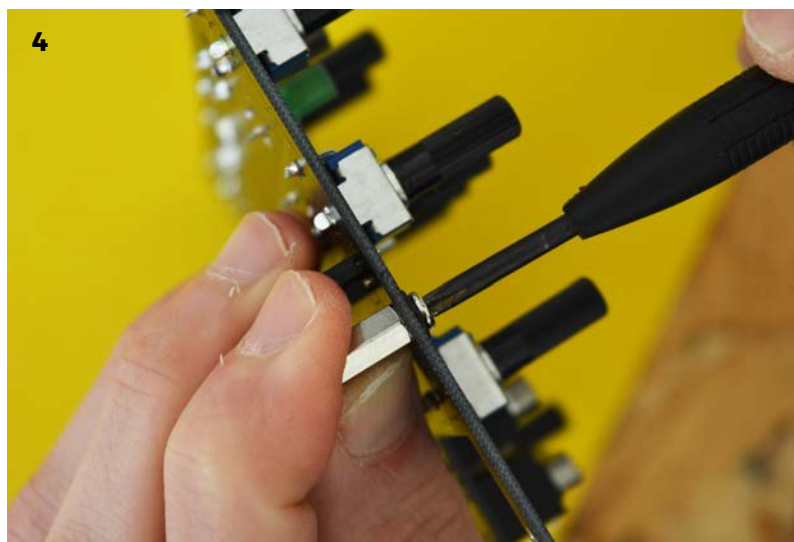
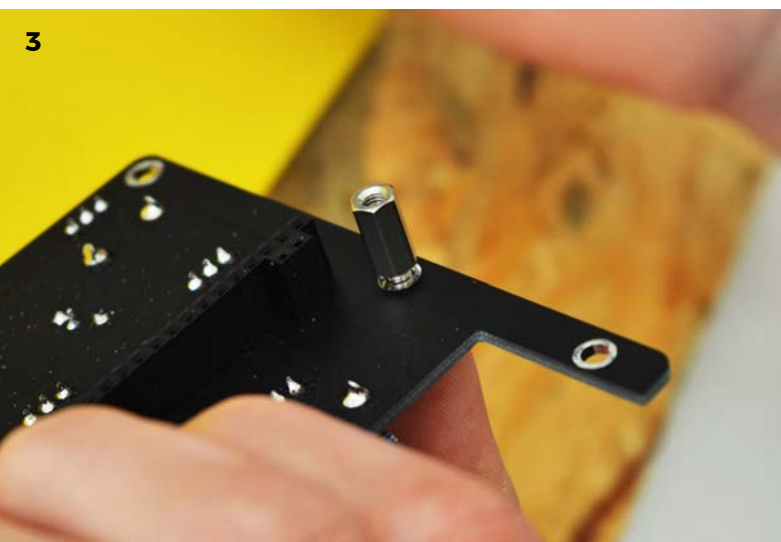
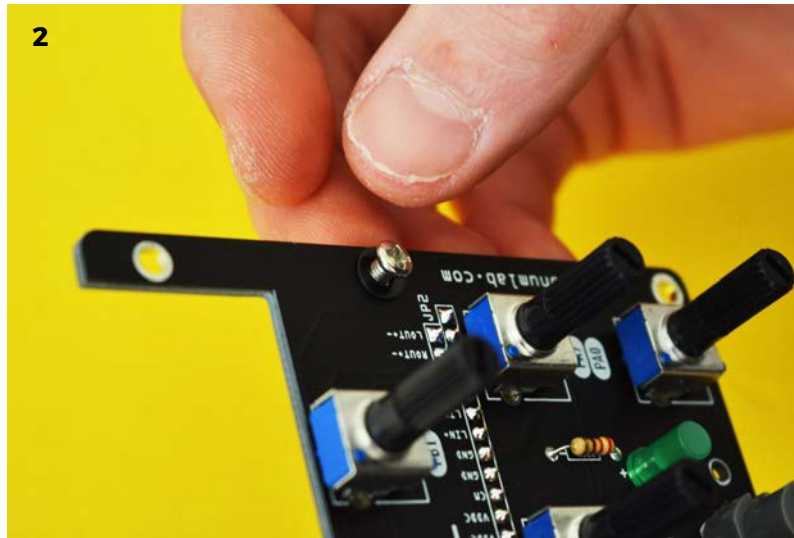
Place the 2 small turrets on the Axoctrl PCB as shown in the picture and fix them well with the bolts. Place now the display and fix it to the turrets with the screws. Adjust the display position and be sure it's straight before to solder it on the Axoctrl board.



10. TURRETS

Now you need to prepare the board to be fixed to the Axoloti Core. For this you'll need to place the 4 turrets like shown in the picture and fix them with the screws. Use the thin washers to ensure the screw-grip. Keep the remaining screws and washers to attach your Axoloti to the board.

NOTE: If you use an AXOBX skip this step.

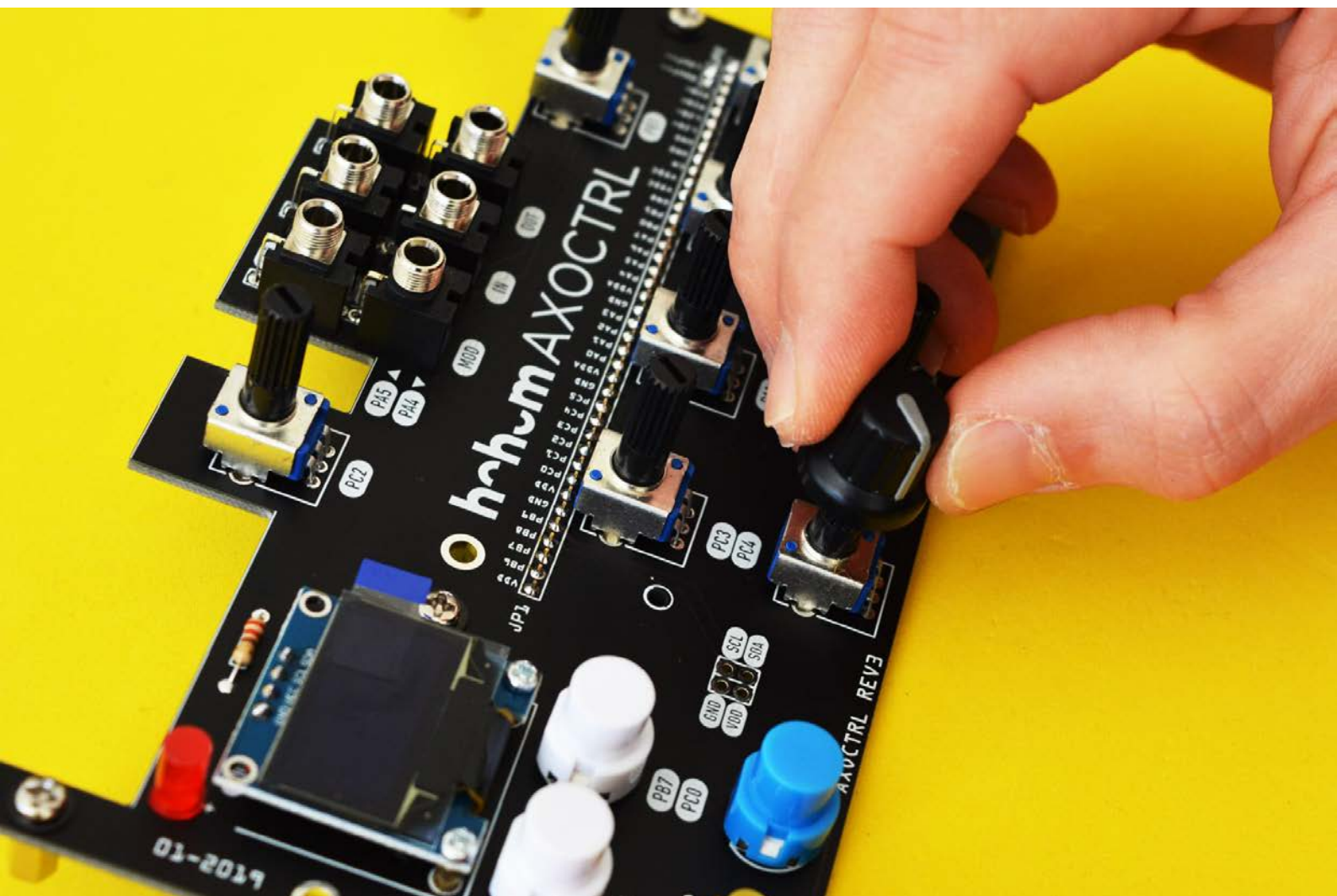


11.

KNOBS

Turn all the potentiometers to the left and place the knobs pointing at the minimum level.

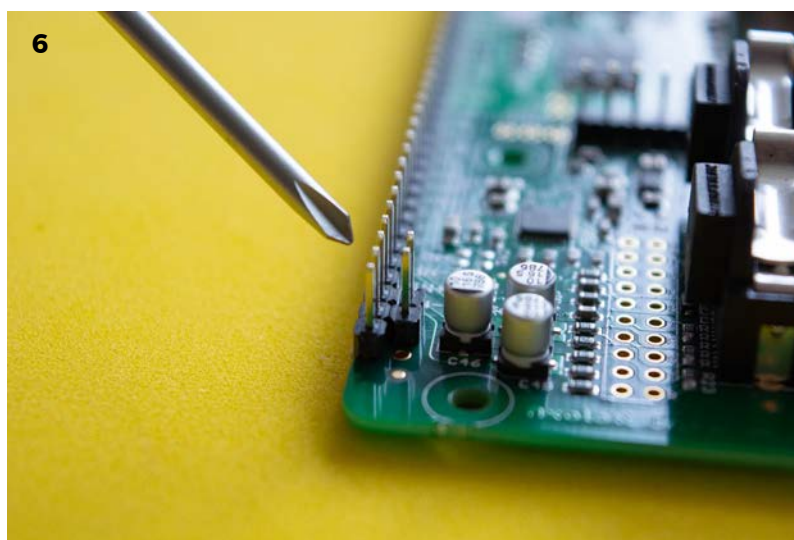
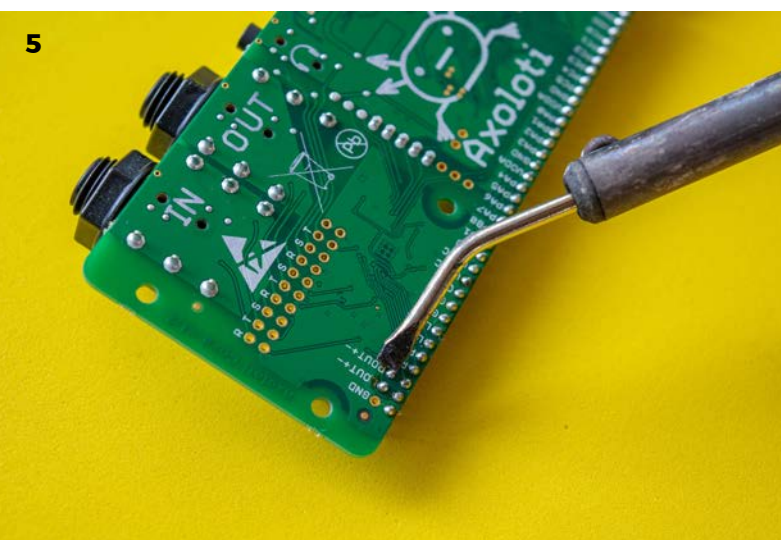
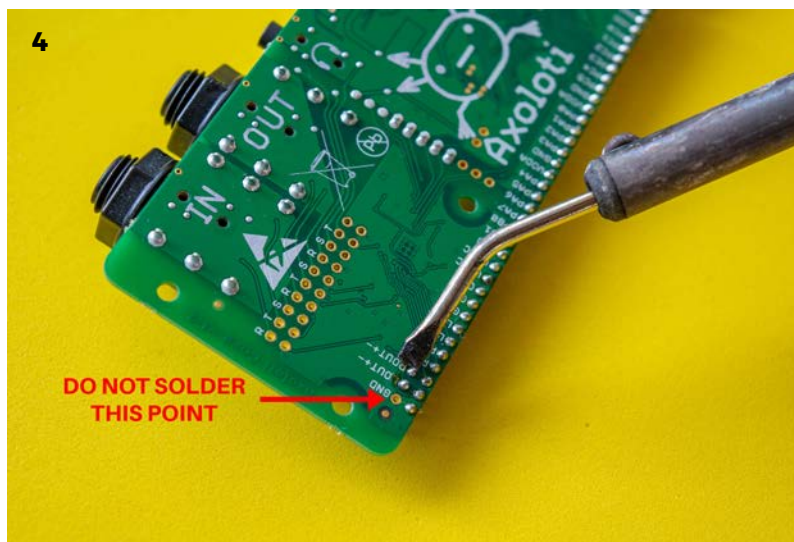
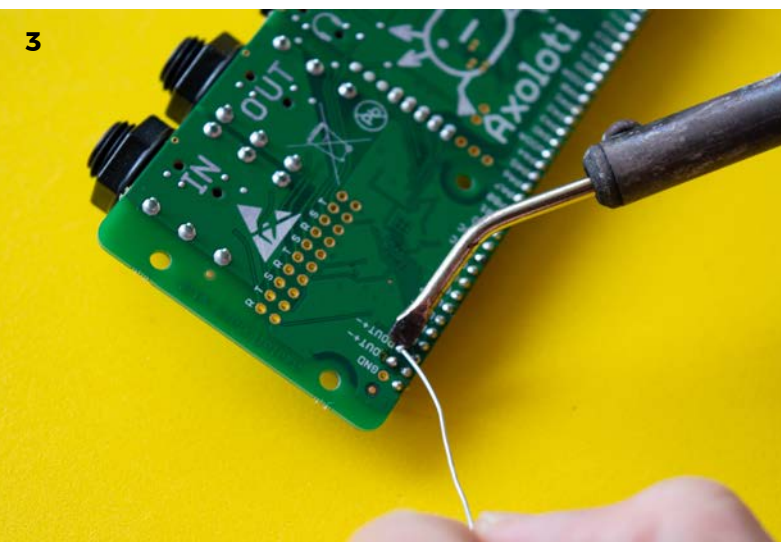
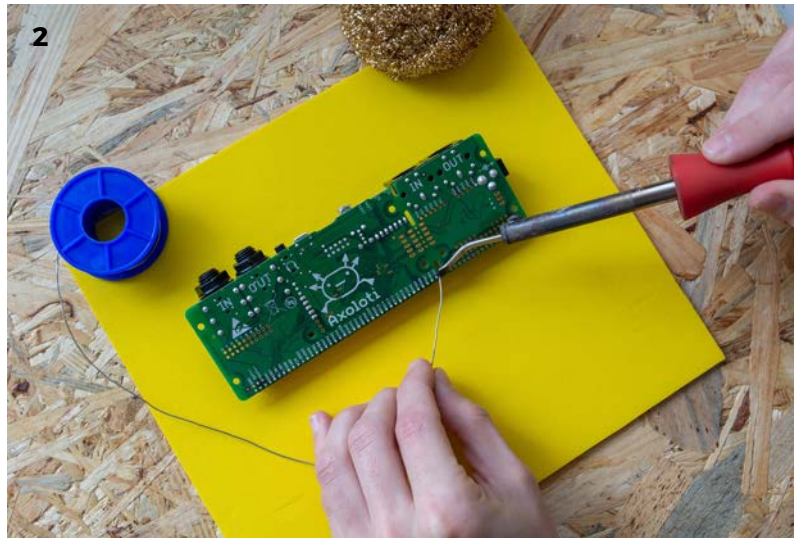
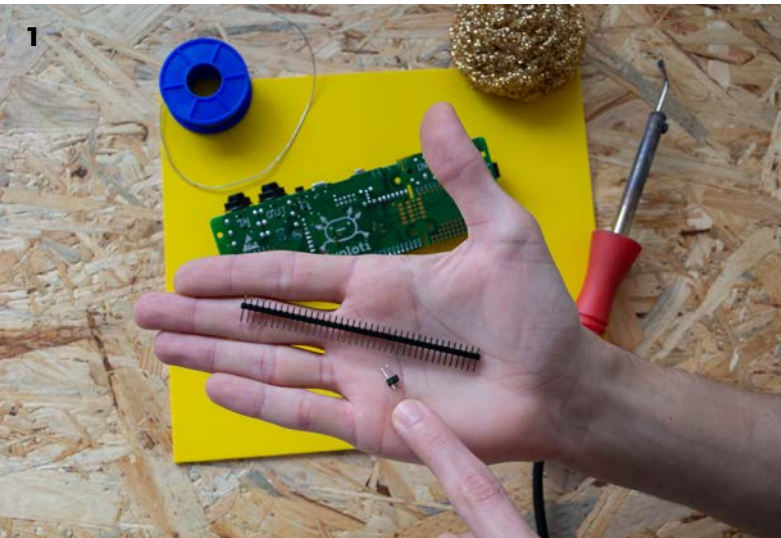
NOTE: If you use an AXOBOX skip this step for later.



12.

PREPARE YOUR AXOLOTI

Solder the two male headers (40+2 pins) on your Axoloti board.

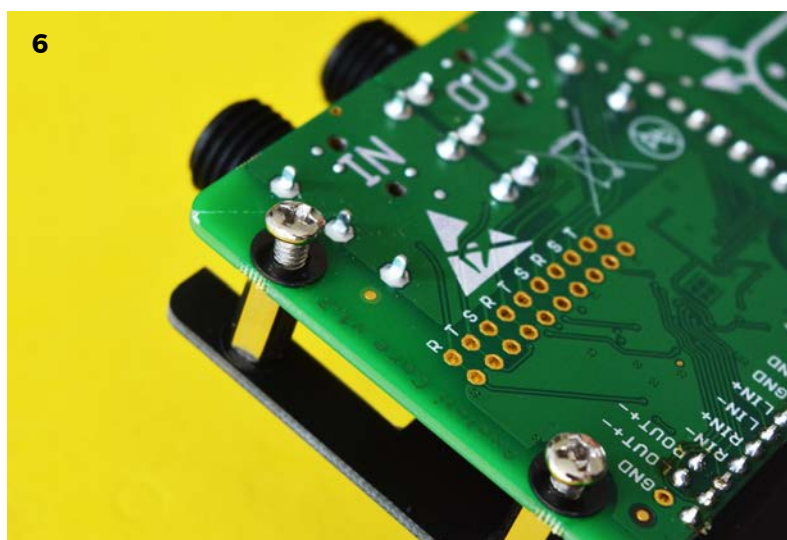
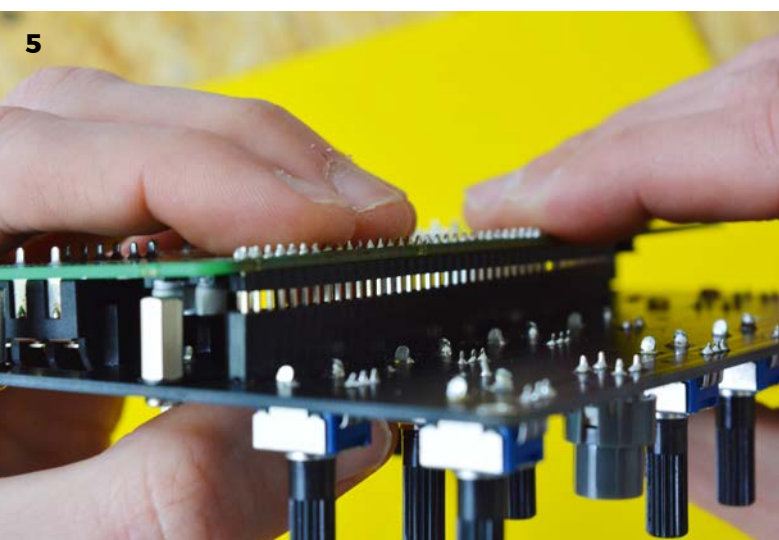
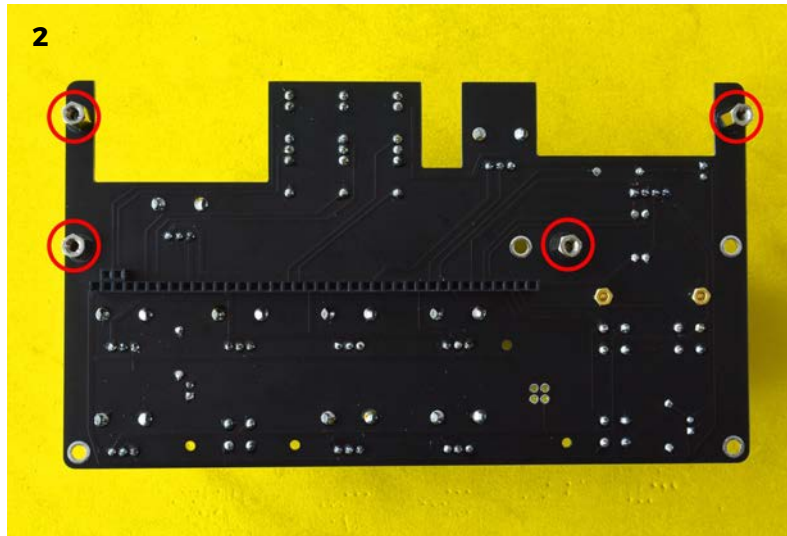


13.

ATTACH YOUR AXOLOTI - PART 1

Place the screws and the four turrets on the Axoctrl board as shown in the pictures. Connect the Axoloti board fitting in the headers and fix the board with the screws.

NOTE: If you use an AXOBOX skip this step.



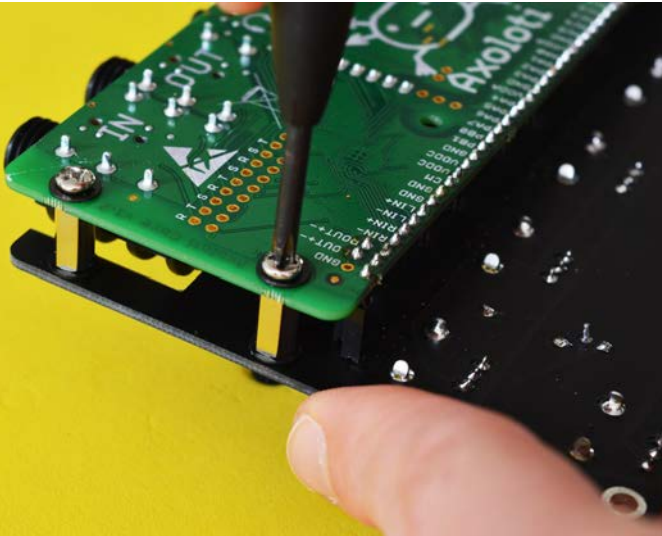
14.

ATTACH YOUR AXOLOTI - PART 2

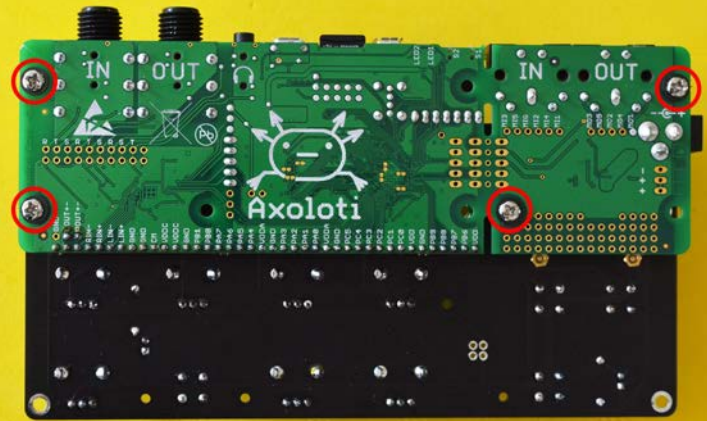
Place the screws and the four turrets on the Axoctrl board as shown in the pictures. Connect the Axoloti board fitting in the headers and fix the board with the screws.

NOTE: If you use an AXOBOX skip this step.

1



2



3



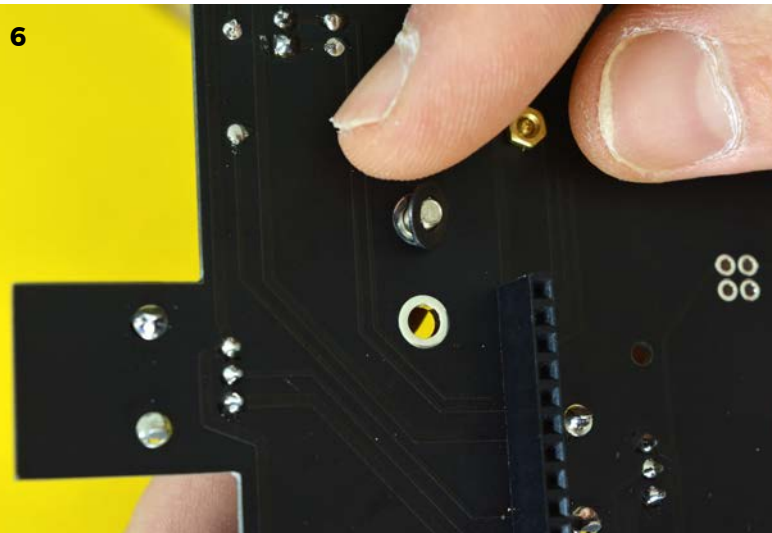
4



5

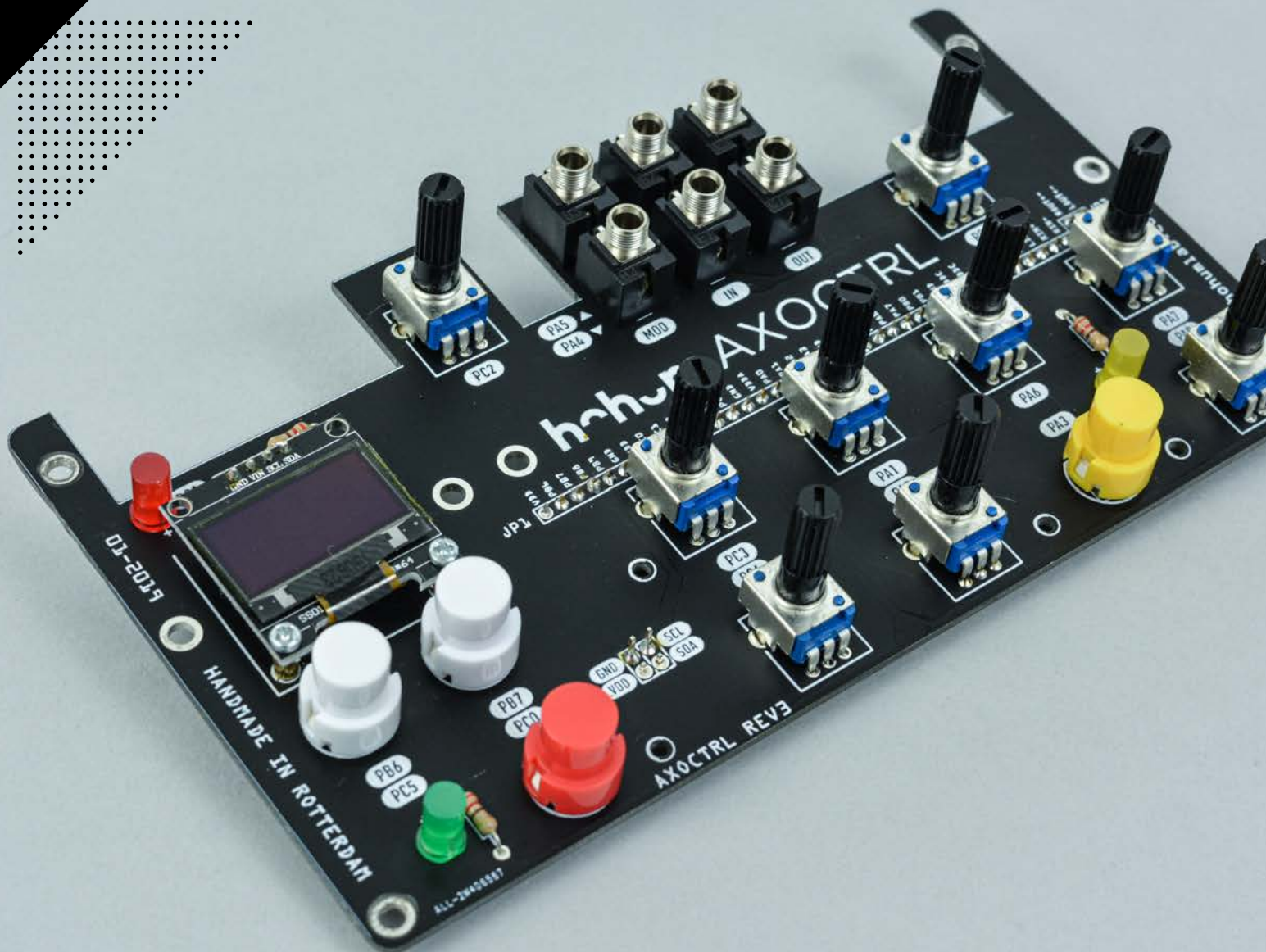


6



BRAVO 🙌

**NOW MAKE SOME
COOL PATCHES!**



AXOBOX

ASSEMBLY GUIDE

MAY 2021



Difficulty
EASY



Time required
10 minutes

GET READY

Knowledge of electronic is not required for this product.

TOOLS YOU'LL NEED



Screwdriver
Star head mid-small

BEFORE TO START

In the box you'll find all the components needed to assembly your AXOBOX with AXOCTRL and Axoloti Core. Please double check with the BOM that no parts are missing in your box.

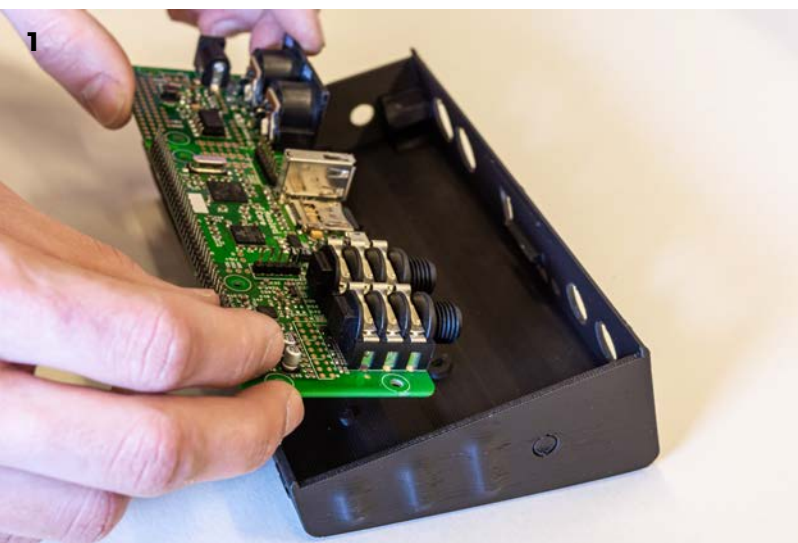


- 01.** Get all the parts out of the package and start placing your AXOBOX on a desk.

1



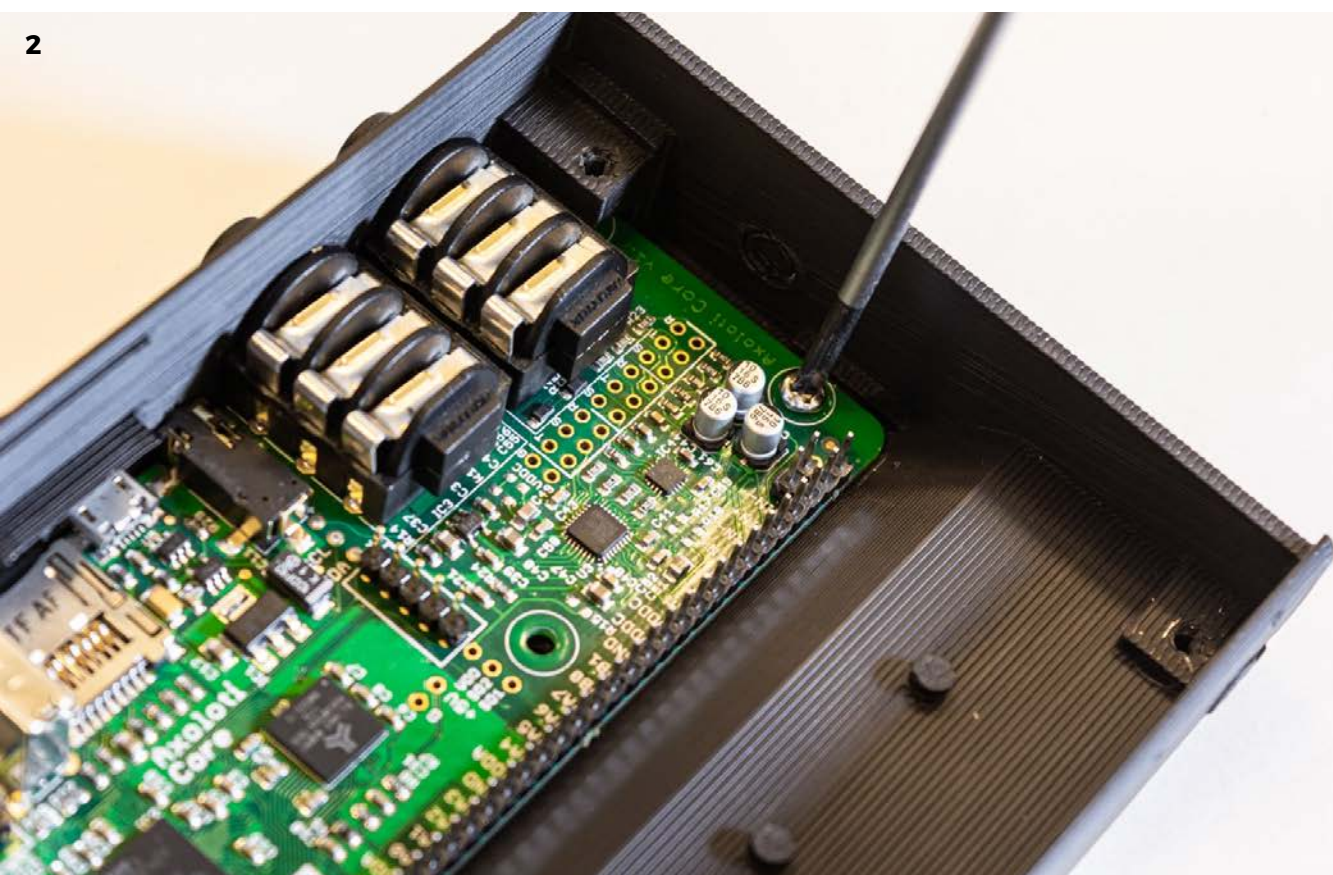
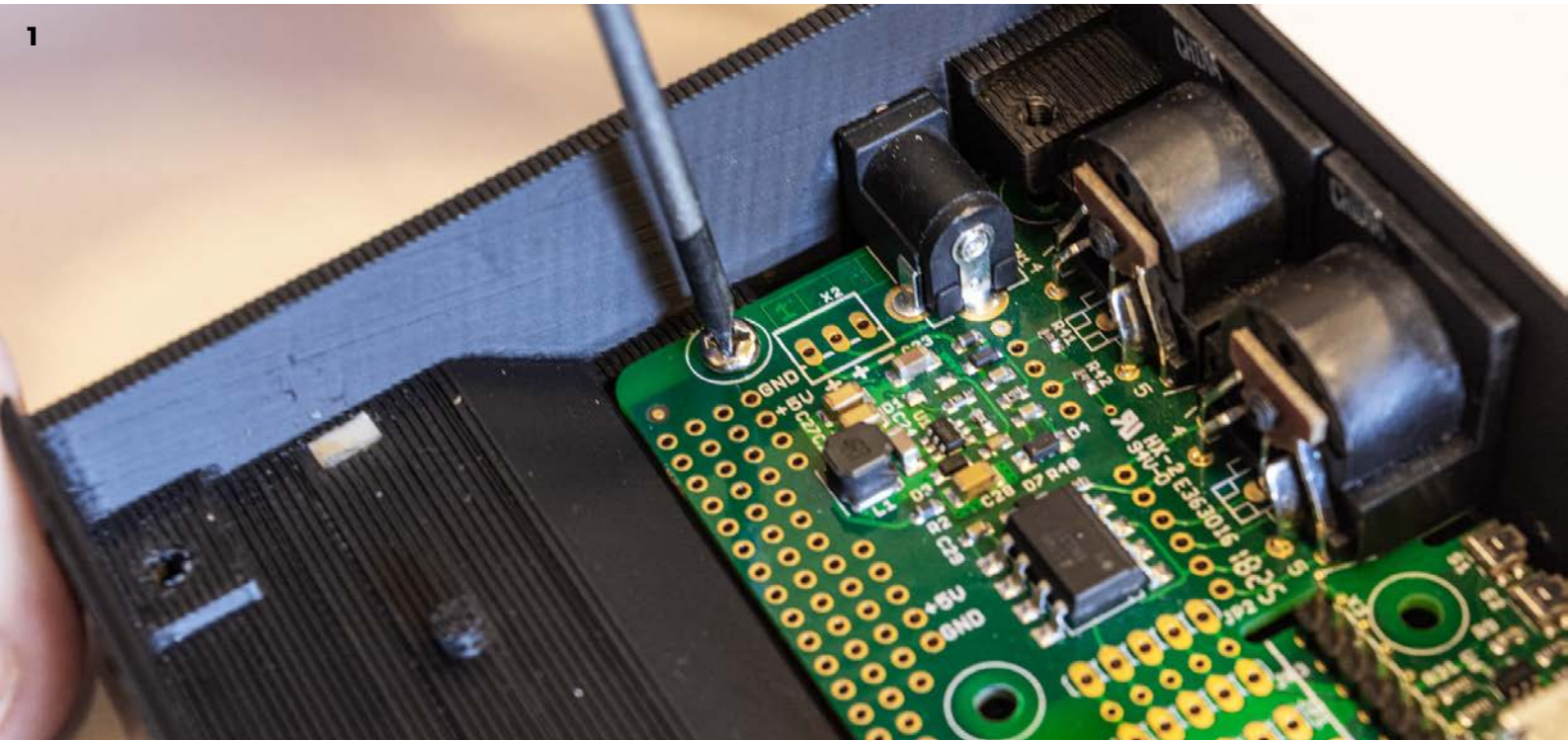
02. Take your Axoloti and slide it in position inside the box.



03. Push slightly the USB host port from the backside through the plastic space till you hear a “click”.



- 04.** Use the two short M3 screws to complete the attachment of your Axoloti. You will need a cross-head screwdriver to do this step. Do not tighten the screws too much.

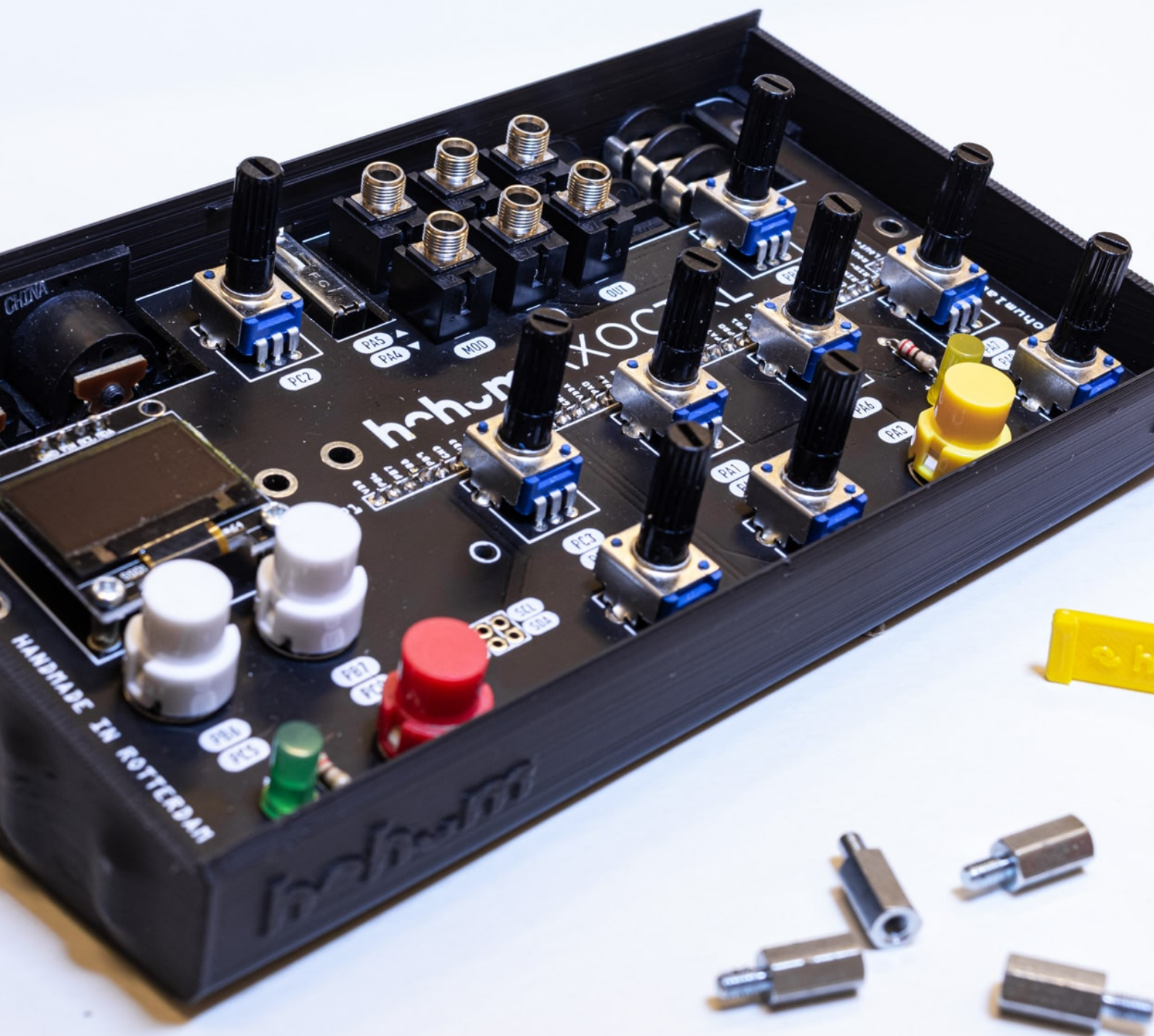


- 05.** Screw the plastic nuts on the jack port from the backside panel.



06. Attach the Axoctrl shield on top of Axoloti Core. Make sure you're aligned with the shield slot and supports.

1



- 07.** Place the HEX turrets in the 4 corners of the box. Use the Magic tool to help your self in this step. Do not thighten the turrets too much, just till they reach the end point.

1



2



AMAZING 🙌

**YOU ACTUALLY
MANAGED IT!**

